



Bobcat[®]

One Tough Animal.

DIESEL FORKLIFTS

7-Series, Pneumatic, 2.0 to 3.5 ton capacity

⊕ MEA & CIS



ONE TOUGH ANIMAL

OUR MISSION

We empower operators to accomplish more, while working in the toughest conditions and tightest situations. When our customers have the will, we provide the way.

BOBCAT'S HISTORY

In 1958, Melroe Manufacturing Company introduced a compact front-end loader that evolved quickly into the M400, the world's first true skid steer loader. The company soon adopted what became the world-famous 'Bobcat' brand – and its success paved the way for the global compact equipment industry we know today.



YEARS OF EXPERIENCE

In 2021, Bobcat expanded its portfolio by acquiring Doosan Industrial Vehicle. This specialist in material handling equipment constructed its first forklift in 1968 and went on to establish a global presence with 400 dealers in 93 countries.



BOBCAT TODAY

Bobcat is expanding its portfolio with the addition of forklifts and reach trucks for the material handling industry. Offering a comprehensive line-up that will meet all your intralogistics needs. Bobcat forklifts and reach trucks are produced in our factory in Korea, while our premium quality warehouse equipment is made in Germany.



TOUGH, AGILE & SAFE

► READY TO GIVE YOUR BUSINESS A LIFT

Give your business a boost with a diesel forklift that ticks all the boxes: a high-performance, powerful, and efficient engine; smooth and variable controls; and a full suite of safety features—all in a machine that is rugged, dependable, and easy to service, with a low total cost of ownership.



► ULTIMATE PRODUCTIVITY

Get more done daily thanks to the high-performing yet efficient G2 and Yanmar engines with best-in-class travel and lifting speeds. **P. 6-7**



► ALL-DAY COMFORT

Experience a more comfortable shift with a range of standard quality-of-life features, including an ergonomic seat, instrument panel, ample leg room, anti-slip plate, and more. **P. 8-9**



► DRIVEN BY SAFETY

Enjoy peace of mind provided by the machine's excellent all-around visibility, superb stability, and a full suite of safety features. **P. 10-11**



► MAXIMUM UPTIME

Reduce your total ownership costs by extending service intervals and utilizing high-quality Bobcat genuine parts and consumables, which contribute to smoother and longer-lasting machine performance. **P. 12-13**

OUTSTANDING PRODUCTIVITY



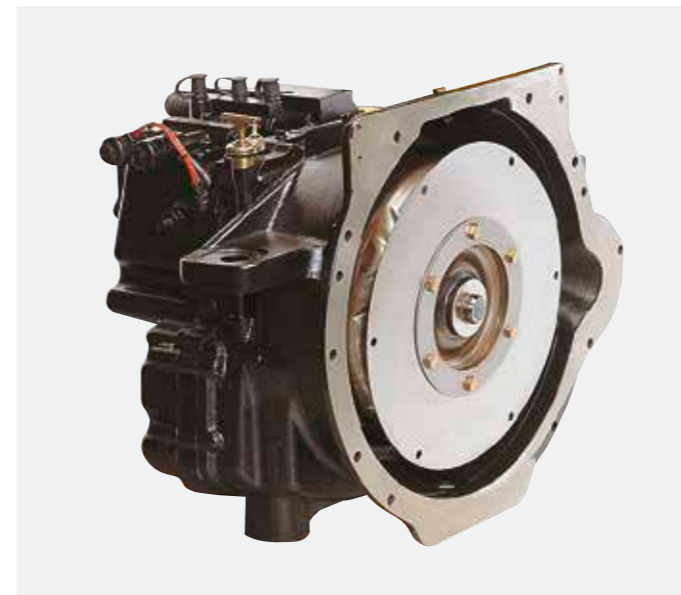
▶ EXCELLENT VISIBILITY

Thanks to the precisely designed overhead guard with angled roof bars, low cowl height, and excellent visibility through the mast, you have the best view of the task at hand, enabling you to accomplish more every day.



▶ POWERFUL DIESEL ENGINE

The high-performance yet efficient G2 or Yanmar engines provide best-in-class travel and lifting speeds. A silent chain timing belt and an aluminum cylinder block design keep the noise level to a minimum.



▶ EFFORTLESS DIRECTIONAL CHANGES

The well-tested powershift transmission precisely controls the clutch oil pressure, ensuring smooth shifts between forward and reverse. This careful control helps prevent transmission damage and makes the forklift stronger and longer-lasting.



▶ RELIABLE BRAKING POWER

Oil-cooled disc brakes offer outstanding stopping performance and extended durability with minimal maintenance. The brake systems are entirely sealed to safeguard against external contaminants, ensuring reliable operation.

COMFORT & CONTROLS



▶ EASILY ADJUSTABLE SEAT & COLUMN

The premium suspension seat provides ample space for the operator and all-day comfort for long shifts. The seat and the steering wheel column are easy to adjust, allowing every operator to feel right at home in the cab.



▶ DELUXE SUSPENSION SEAT

The deluxe suspension seat prioritizes operator comfort with an adjustable seat back, extended seat travel length, and front-side weight resistance. These features enable multiple adjustments for the most comfortable seating experience.



▶ FULL OR MODULAR CAB

Equip your forklift with one of our factory-made cabs to conquer all weather conditions. Enhance comfort for all-day use by adding options such as a heater, operator fan, and power jack.



▶ REAR CAMERA DISPLAY

Equip your machine with a rear camera that feeds into the in-cab display when in reverse, ensuring you always have the best view of your workplace without sacrificing comfort.

▶ RADIO AND MP3 PLAYER



Add a radio and MP3 player to your cab to enjoy even the longest shifts.

▶ WELL-PLACED HANDLES

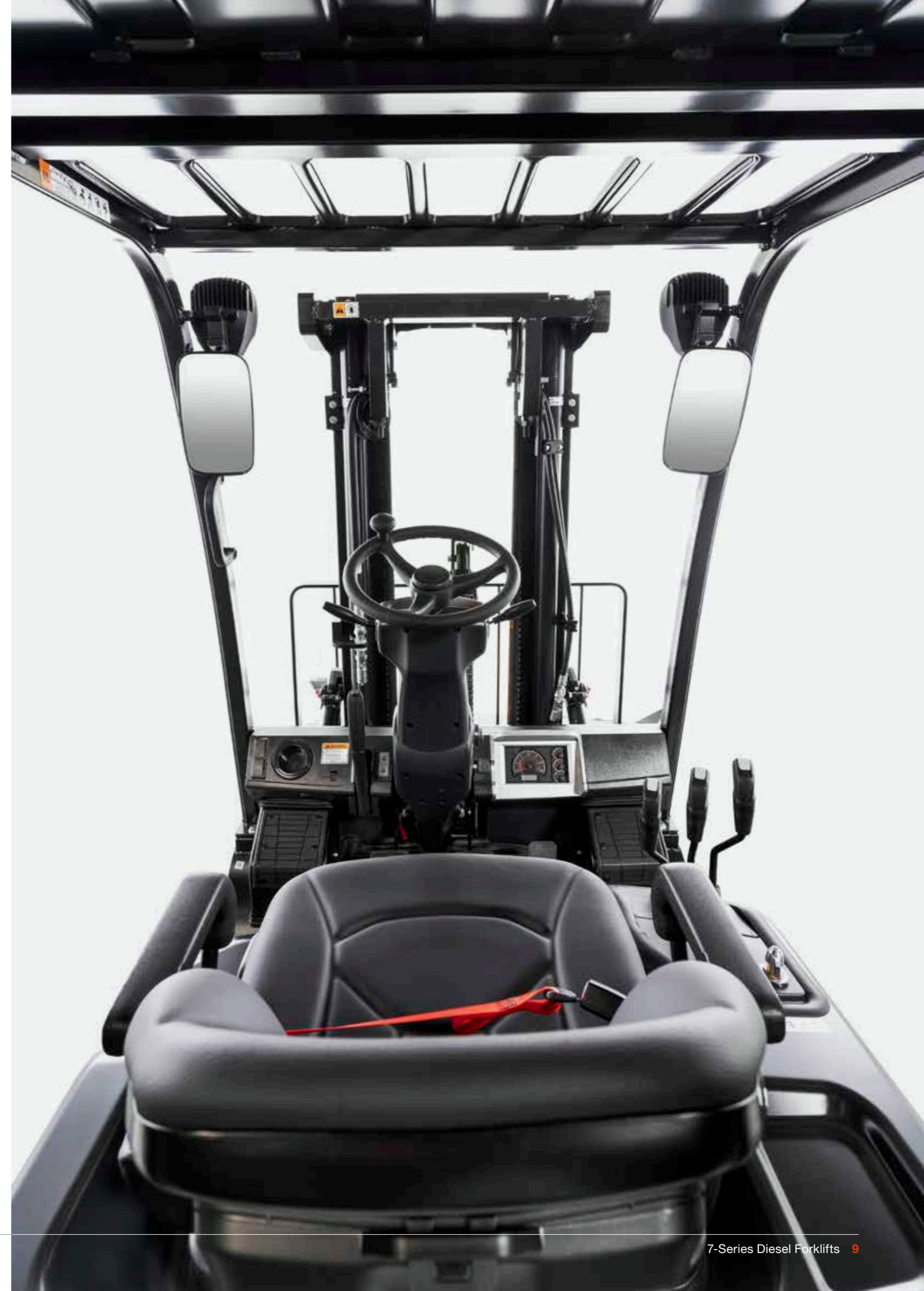


Stepping in and out of your vehicle is quick and comfortable, thanks to the well-placed entry bar and handles.

▶ ERGONOMIC CONTROLS



Thanks to the ergonomic design and perfect placement of control elements, operating this machine is as easy as can be.



SAFETY IN EVERY MOVE

▶ ADVANCED PROTECTION FOR YOU AND YOUR OPERATION

Bobcat forklifts have safety embedded in their DNA. Packed with tons of features that protect you and your investment, these machines provide peace of mind in every task, every day.

▶ OPERATOR SENSING SYSTEM (OSS)

The truck's travel and mast lifting functions stop when the operator leaves the seat, ensuring the forklift won't perform any unintended movements.



▶ LIMP HOME MODE

In the event of a critical issue, this feature enables the forklift to operate at reduced capacity, empowering operators to safely navigate to a designated area for inspection and repair.



▶ INTERLOCKING 4TH LEVER

The 4th lever is locked until manually released by pressing the button on the lever. This guarantees load security, eliminating the risk of unintended release.



▶ WEIGHT SCALE

Never second-guess if you're overloading your forklift with our weight indicator or scale options.



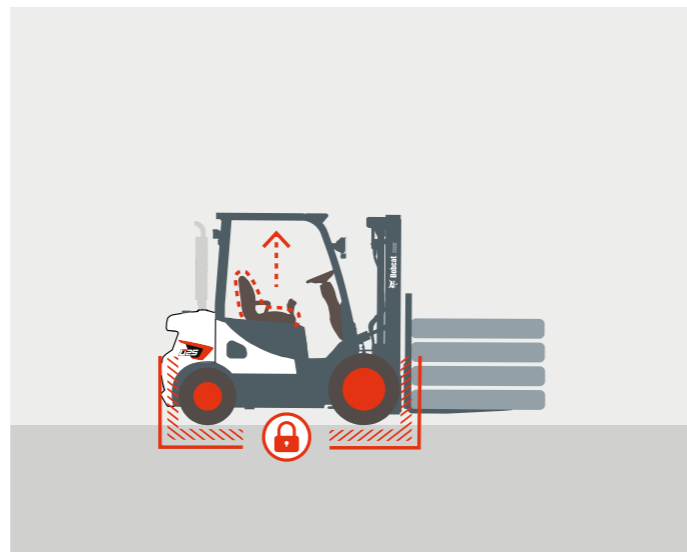
▶ SEAT BELT SEQUENCE INTERLOCK

The operator must be seated with a fastened seatbelt to operate the truck.



▶ PARKING BRAKE ALERT

Prioritize operator safety and safeguard against accidental movement with our parking brake warning system.



▶ LARGE PANORAMIC MIRROR

The large panoramic mirror improves safety conditions and boosts overall productivity by enhancing rear visibility.



▶ POWERFUL LED LIGHTS

The powerful LED lights can brighten even the darkest corners of your workplace, ensuring you're always aware of your surroundings.



BUILT TO LAST

▶ EXCELLENT RELIABILITY

Thanks to a powerful engine, dust- and water-resistant parts, and shock-absorbing hydrostatic power steering, Bobcat's 7-Series Diesel Forklifts are built tough to provide you with maximum uptime and dependability.

THERE'S NO TIME FOR DOWNTIME. STAND UP TO EVERY TASK THAT COMES YOUR WAY. DAY AFTER DAY.

Robust frame and overhead guard designed to withstand the demands of industrial environments and regular heavy use

Wide hood opening with hood locking cylinders, and a tool-less removable side panel for easy access to main components

The cyclone-type dual-element air filter protects the engine, extending its lifespan by shielding it from harmful contaminants

J-Hook Mounts distribute weight evenly

No mechanical connections between the steering wheel and steer axle to prolong maintenance intervals



Six roller carriage for superior strength and durability when handling wider and longer loads

U-joint insulates powertrain from shock and vibration to reduce engine problems and leaks

Durable cast-iron housing for precise axle alignment and extended life, with a high-tensile alloy steel shaft to boost torque transmission

Oil-cooled disc brakes (ODB) with a lifespan of up to 20 000 hours

Large capacity radiator and optimized airflow in the counterweight enhances reliability and durability

2 YEAR WARRANTY

▶ WARRANTY

Bobcat develops every machine to the highest standards of quality and durability. That's why our standard warranty provides 24 months or 2 000 operating hours (whichever occurs first) of coverage.



▶ PROTECTION PLUS EXTENDED WARRANTY

Enjoy total peace of mind with Protection Plus extended warranty. Providing the same level of protection as the standard warranty, Protection Plus also reflects different customer needs and expectations by offering a choice of durations and annual operating hours.

▶ EXTENSIVE DEALER NETWORK

You can rely on our network of dealers and service partners who are always ready to help you.

▶ BOBCAT GENUINE PARTS

Quality components delivered to our dealers guarantee that all of our equipment is built to last, withstand the toughest conditions, and provide reliable performance.

MAIN SPECIFICATIONS

TECHNICAL DATA ACCORDING TO VDI 2198							
	D20S-7			D25S-7			
Drive	diesel						
Operator type	seated						
Load capacity (kg)	Q	2 000			2 500		
Load center (mm)	c	500					
Load distance: center of drive axle to fork (mm)	x	480					
Wheelbase (mm)	y	1 625					
Service weight (kg)		3 690			4 065		
Tread, front (mm)	b11	975					
Tread, rear (mm)	b12	1 000					
Tilt of mast / fork carriage forw. / backw. (°)	α/β	6 / 10					
Height, mast lowered (mm)	h1	1 850 – 3 150					
Free lift (mm)	h2	147 – 2 240					
Lift height (mm)	h3	2 580 – 8 250					
Height, mast extended (mm)	h4	3 290 – 9 210					
Height of overhead guard (mm)	h6	2 183					
Height of seat (mm)	h7	1 026					
Overall length (mm)	l1	3 565			3 630		
Length to forkface (mm)	l2	2 530			2 595		
Overall width (mm)	b1/b2	1 170					
Fork dimensions (mm)	s/e/l	40 × 100 × 1 050					
Fork carriage ISO 2328, class / type A, B		II/A					
Fork carriage width (mm)	b3	1 103					
Ground clearance, loaded, below mast (mm)	m1	115					
Ground clearance, center of wheelbase (mm)	m2	143					
Aisle width for pallets 1 000 × 1 200 crossways (mm)	Ast	3 900			3 945		
Aisle width for pallets 800 × 1 200 lengthways (mm)	Ast	4 100			4 145		
External turning radius (mm)	Wa	2 220			2 265		
Internal turning radius (mm)	b13	775					
Travel speed, loaded / unloaded (km/h)		21 / 22	18 / 19	19 / 19.5	21 / 22	17.5 / 18.5	19 / 19.5
Lift speed, loaded / unloaded (mm/s)		530 / 550	530 / 580		520 / 580	520 / 550	
Lowering speed, loaded / unloaded (mm/s)		500 / 450	510 / 460		500 / 450	510 / 460	
Drawbar pull, loaded / unloaded (@ 1.6 km/h) (kg)		1 788 / 1 759	1 574 / 1 559	1 769 / 1 747	1 789 / 1 775	1 569 / 1 569	1 750 / 1 740
Max. drawbar pull, loaded / unloaded (kg)		1 996 / 1 951	1 856 / 1 817	2 050 / 2 017	2 000 / 1 971	1 858 / 1 834	2 031 / 2 011
Gradeability, loaded / unloaded (@ 1.6 km/h) (%)		33 / 54.4	29.5 / 48.5	33 / 55	28 / 48.6	25 / 43	28.2 / 50
Max. gradeability, loaded / unloaded (%)		37.5 / 62.3	35 / 59	38.5 / 66.5	30.4 / 53.3	30 / 52.5	33 / 60.3
Service brake		foot / hydraulic					
Engine manufacturer/type		Doosan / D24NAP	Yanmar / 4TNE94L	Yanmar / 4TNE98	Doosan / D24NAP	Yanmar / 4TNE94L	Yanmar / 4TNE98
Engine power according to DIN ISO1585 (kW)		46	35.3	43.7	46	35.3	43.7
Rated speed (min ⁻¹)		2 200		2 300	2 200		2 300
Torque at 1/min (Nm)		262	167	191	262	167	191
Number of cylinders / displacement (-/cm ³)		4 / 4 / 2 392	4 / 4 / 3 054	4 / 4 / 3 319	4 / 4 / 2 392	4 / 4 / 3 054	4 / 4 / 3 319
Battery voltage / normal capacity (V/Ah)		12 / 85					
Operating pressure for attachments (bar)		156					
Oil flow for attachments (l/min)		60					
Fuel tank capacity (l)		51					

Specification values in this sheet have been rounded. Performance may vary depending on operating conditions.

Products and specifications are subject to improvement and change without prior notice.

(1) Mast dimensions refer to a range from the lowest to the highest available mast with load backrest.

TECHNICAL DATA ACCORDING TO VDI 2198								
D30S-7			D33S-7			D35C-7		
diesel								
seated								
3 000			3 300			3 500		
500								
485								
1 700								
4 565			4 750			4 915		
982								
1 000								
6 / 10								
1 565 – 3 140								
147 – 2 000			152 – 1 465					
2 030 – 8 250			2 030 – 6 010			1 800 – 5 655		
3 290 – 9 205			3 290 – 7 265			3 060 – 6 915		
2 183								
1 026								
3 744			3 774			3 809		
2 700			2 730			2 765		
1 197								
45 × 125 × 1 050								
III/A								
1 115								
105								
143								
4 050			4 080			4 115		
4 250			4 280			4 315		
2 365			2 395			2 420		
761								
20 / 21	17 / 18	18 / 18.5	20 / 21	17 / 18	18 / 18.5	20 / 21	17 / 18	18.5 / 19
510 / 580	500 / 550		480 / 550	490 / 550		470 / 540	420 / 550	
500 / 450	510 / 460		500 / 450	510 / 460		500 / 450	510 / 460	
1 859 / 1 820	1 624 / 1 604	1 831 / 1 797	1 849 / 1 822	1 614 / 1 604	1 822 / 1 807	1 779 / 1 756	1 554 / 1 549	1 807 / 1 750
2 090 / 2 027	1 944 / 1 887	2 150 / 2 091	2 081 / 2 030	1 932 / 1 891	2 140 / 2 106	2 002 / 1 951	1 854 / 1 813	2 055 / 2 034
25.5 / 43.5	22.5 / 38.5	25 / 43.5	24 / 41.6	21 / 37	23.5 / 42.5	22 / 39.1	19 / 34	24.5 / 40
28.8 / 49.6	27 / 46.5	29.5 / 52	27 / 47.3	25 / 44.5	27.5 / 50.5	24.8 / 44.2	23 / 40.5	25 / 47
foot / hydraulic								
Doosan / D24NAP	Yanmar / 4TNE94L	Yanmar / 4TNE98	Doosan / D24NAP	Yanmar / 4TNE94L	Yanmar / 4TNE98	Doosan / D24NAP	Yanmar / 4TNE94L	Yanmar / 4TNE98
46	35.3	43.7	46	35.3	43.7	46	35.3	43.7
2 200		2 300	2 200		2 300	2 200		2 300
262	167	191	262	167	191	262	167	191
4 / 4 / 2 392	4 / 4 / 3 054	4 / 4 / 3 319	4 / 4 / 2 392	4 / 4 / 3 054	4 / 4 / 3 319	4 / 4 / 2 392	4 / 4 / 3 054	4 / 4 / 3 319
12 / 85								
156								
60								
51								

Note: Load capacities are based on the standard chassis without a side shifter.

STANDARD EQUIPMENT & OPTIONS

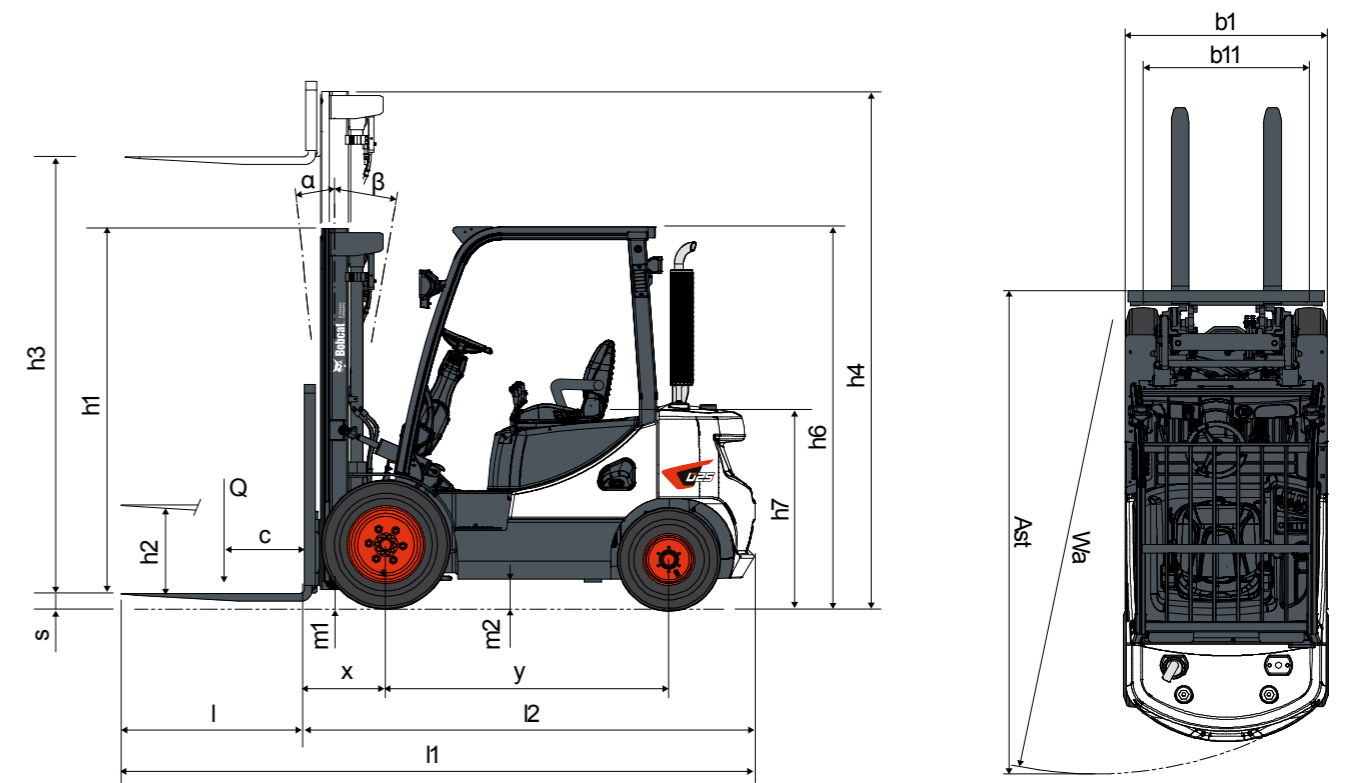
STANDARD EQUIPMENT & OPTIONS	
SAFETY	
Operator Sensing System	✓
Mast interlock – tilt, lift and lower	✓
2 front LED lights	✓
Spark arrestor	•
4 th lever interlock	•
Safety light	•
Back-up alarm	•
Rear-view camera	•
ERGONOMICS	
Integrated instrument panel	✓
Excellent visibility	✓
Anti-slip step plate	✓
Adjustable steering column	✓
Panoramic mirror	•
Fingertip	•
Premium seat	•
Full cab	•
Rear grab bar	•
Steering wheel knob	•

STANDARD EQUIPMENT & OPTIONS	
PRODUCTIVITY	
High powered, fuel efficient engines	✓
Inching pedal	✓
Pedal Location (accelerator, brake and inching)	✓
Drive-in-rack overhead guard	✓
Autotilt levelling	•
Quick disconnect hose couplings	•
RELIABILITY	
Waterproof connectors	✓
Dual element air cleaner	✓
Pre-cleaner	•
Radiator screen	•
Vented side panel	•
SERVICEABILITY	
Tool-less side panel / floor plate	✓
Junction box	✓
Wide hood open angle	✓

*This list is based on factory data.
Standard or optional can vary for specific countries.

• = option
✓ = standard
– = not available

DIMENSIONS



Excellent visibility



Pre-cleaner



Rear grab bar



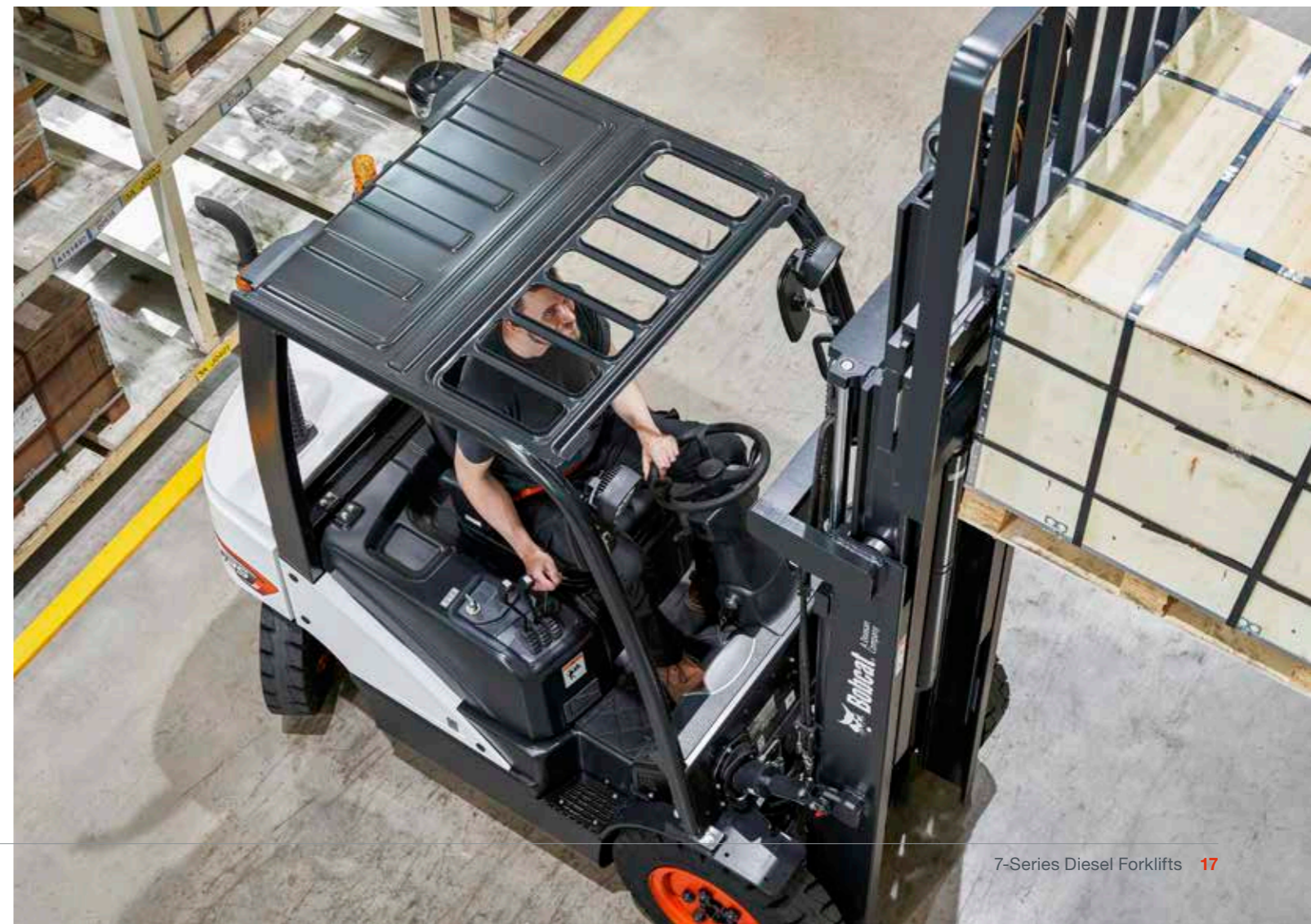
Anti-slip step plate



Inching pedal



Panoramic mirror





FINANCING OPTIONS

24, 36, OR 48 MONTH FINANCING*

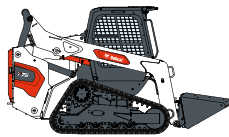
Take advantage of 24, 36 or 48 month financing programs starting from **0% interest** and improve your cashflow.

Ask your dealer for the financing offers available.

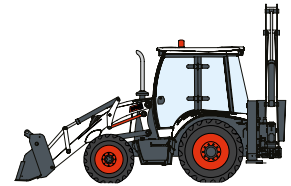
340 MACHINES / 150 ATTACHMENT FAMILIES / 1 TOUGH ANIMAL



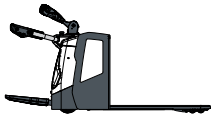
**SKID-STEER
LOADERS**



**COMPACT TRACK
LOADERS**



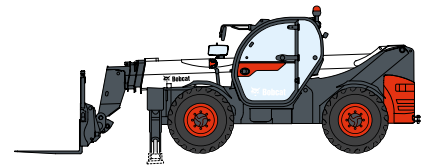
**BACKHOE
LOADERS**



**WAREHOUSE
EQUIPMENT**



FORKLIFTS



TELEHANDLERS



**LIGHT COMPACTION
EQUIPMENT**



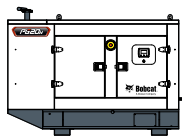
**COMPACT
EXCAVATORS**



**SMALL ARTICULATED
LOADERS**



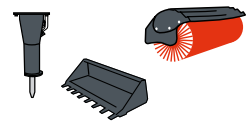
**MINI TRACK
LOADER**



**PORTABLE
GENERATORS**



AIR COMPRESSORS



ATTACHMENTS

DOOSAN

Bobcat is a Doosan Company. Doosan is a global leader in construction equipment, power & water solutions, engines, and engineering proudly serving customers and communities for more than a century. | Bobcat and the Bobcat logo are registered trademarks of Bobcat Company in the United States and various other countries. ©2024 Bobcat Company. All Rights Reserved.



Bobcat®

*Financing options may vary by country and dealer. Always ask your dealer about currently available financing options. Terms and conditions may apply.

Doosan Bobcat EMEA, U Kodelky 1810, 263 12 Dobříš, Czech Republic